

# Multifunctional corneal topographer



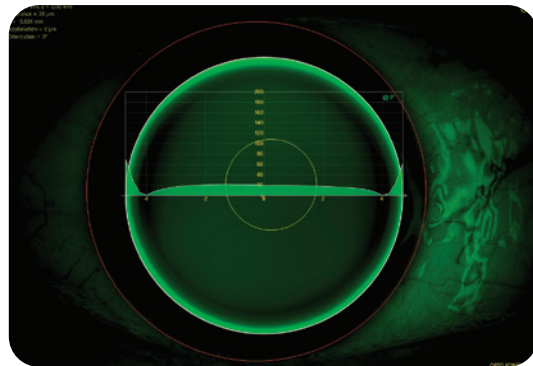
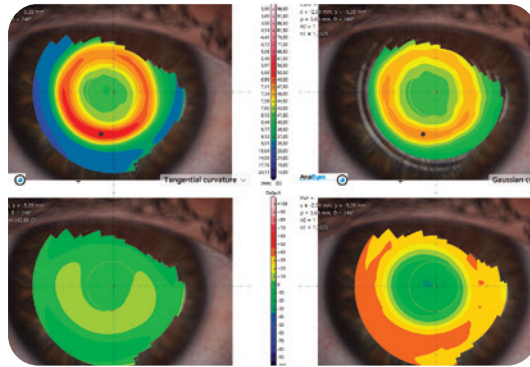
Precise diagnostic tool  
for effortless contact  
lens fitting.

## CORNEA 550+

a multifunctional topographer delivering precise corneal measurements, contact lens fitting process, and a dry eye report.

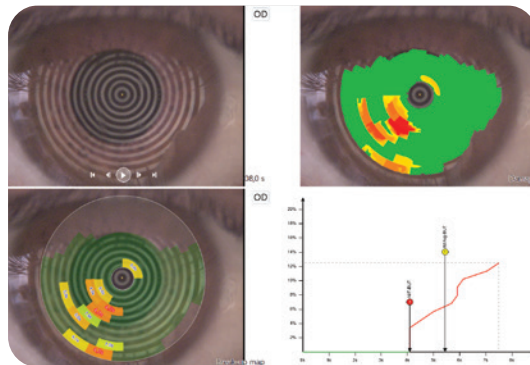
### Precise evaluation of the corneal surface

- Corneal topography, including a variety of graphic presentations to facilitate anterior segment evaluation.
- Keratoconus screening module providing insightful pre-op information helping more informed clinical decisions.
- Enhanced repeatability enabled by newer focus design and higher image resolution<sup>1</sup>.



### Streamlined contact lens fitting process

- The fluorescein image simulation helps the practitioner to choose the most adequate lens from an extensive contact lenses library, comprising 27 brands.
- Dynamic and static capture of pupillary reactions for different light conditions (photopic, mesopic and scotopic).



### Advanced tear film analysis for dry eye diagnosis

- The lipid layer is assessed with the optional auxiliary cone.
- Non-invasive measurement of the tear film break-up time (NIBUT) supported with video and pictures.
- Meibography including grading color scale to evaluate the gland loss.

### A valuable tool to facilitate communication

- Paired with a high definition screen, enabling easy exchange of information with patients.
- Comprehensive and intuitive graphic representations to enhance your expertise.



1. Compared to the previous version of the instrument, Cornea 550.



# Technical specifications

## Specifications

### Light Source

---

White light for corneal topography and videokeratoscopy

Blue light (470 nm) for pictures and video in fluorescein

IR LED (940 nm) for pupillography and meibography

---

### Digital Camera

---

Color, high resolution (1440 x 1080)

---

### Measurements Points

---

6144

---

### Working Distance

---

74 mm

---

### PC Connection

---

USB 3.0

---

### Dimensions and Weight

---

510 (H) x 205 (W) x 320 (D) mm - 6 kg approx

---

## Minimum requirements

### PC Desktop

---

Processor Intel®: 8th gen or higher

CPU: i5 quad core, i7 or i9 (2.5 GHz or higher)

RAM: 8GB or higher

Video card: 1GB (non-shared memory), 1920x1080 or higher

---

### Software

---

Windows® 10 Professional (64 bit) or higher

---



Cornea 550+ - Brochure - EN - VI - June 2025

ESSILOR INTERNATIONAL  
147 rue de Paris  
94220 Charenton-le-Pont, France

CORNEA 550+ (ANTARES +) is a EU Class I-m medical device intended for Optometry. CE 0051 marked. Manufacturer: CSO. For professional use only, read attentively the instructions for use.

As improvements are made, these specifications are not contractually binding and may be modified without prior notice. CORNEA 550+ (ANTARES +) is a trademark of Essilor International. Windows® is a trademark of Microsoft Corporation. Pentium® is a trademark of Intel Corporation.

Tel.: +33 (0)1 49 80 62 80  
[www.essilor-instruments.com](http://www.essilor-instruments.com)  
© Essilor International - June 2025

